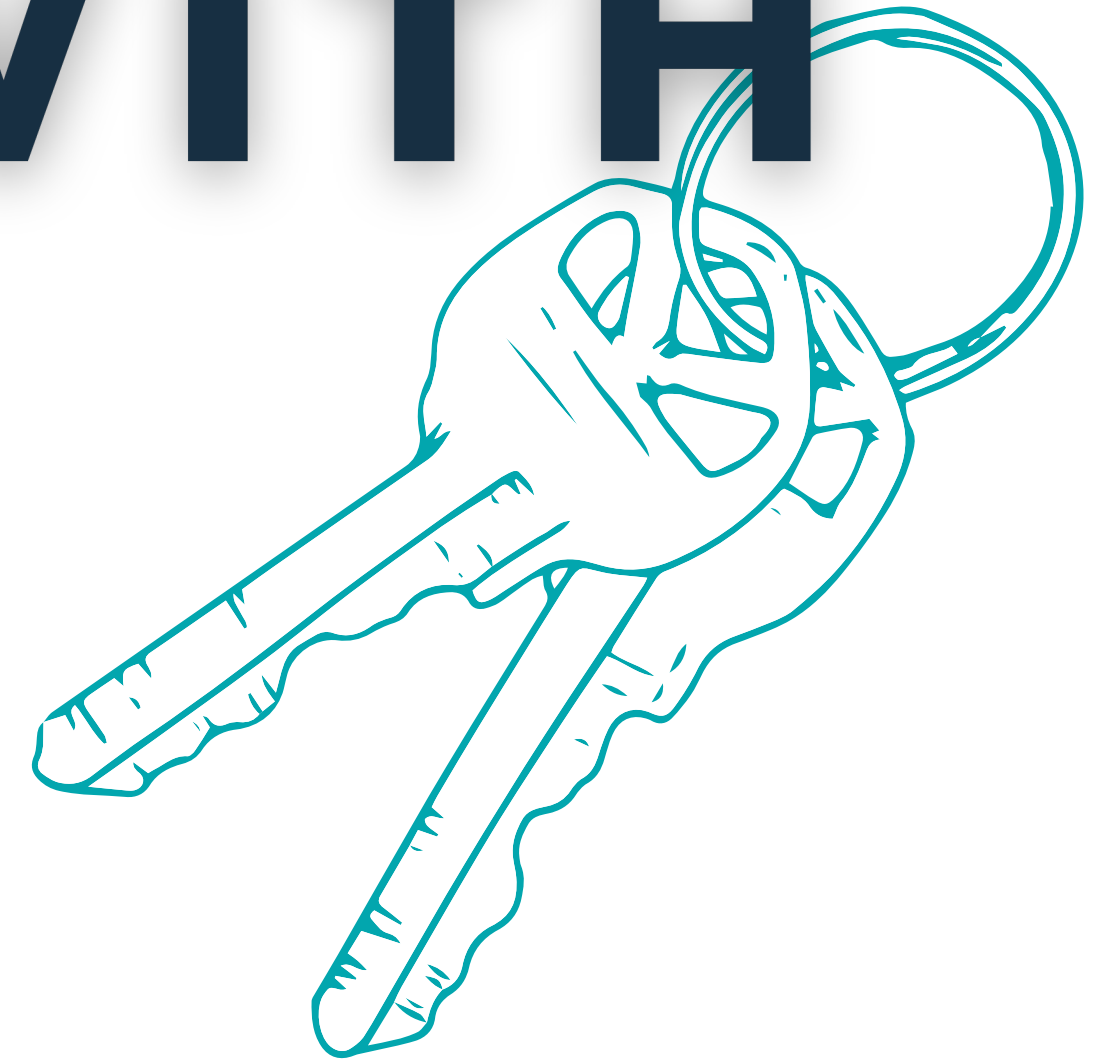


**KEYS TO
SUCCESS WITH
BCM**



SCHEDULING YOUR ANIMALS

You have 4 options for beef...

BCM Butcher Truck (bison also!)

Fillmore Beef

Pease Packing Co

West Michigan Beef (bison also!)

SCHEDULING YOUR ANIMALS

You have 3 options for pork...

BCM Butcher Truck

DeVries Meats

Pease Packing Co

SCHEDULING YOUR ANIMALS

You have 2 options for lamb/goat...

BCM Butcher Truck

Pease Packing Co



HEY MOO...

REMEMBER TO SCHEDULE EARLY!

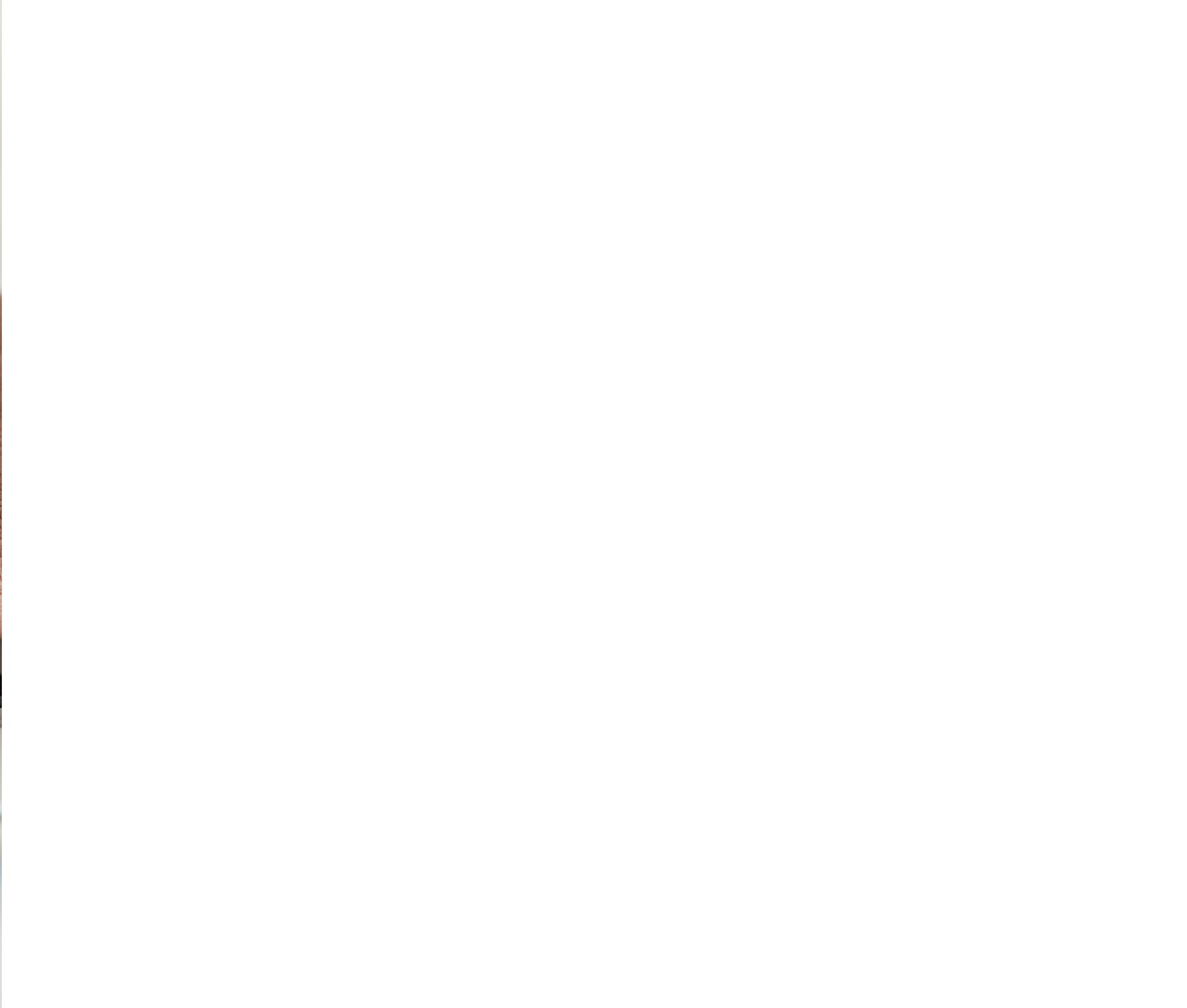
If you know that your animals are not ready or you cannot make your appointment, contact the kill floor/butcher truck **immediately.**

This will allow other farmers to have a chance to get animals in who may be on a wait list!



**Once you are on the
kill floor's schedule,
you are automatically on
Byron Center Meats' schedule.**

Now what??



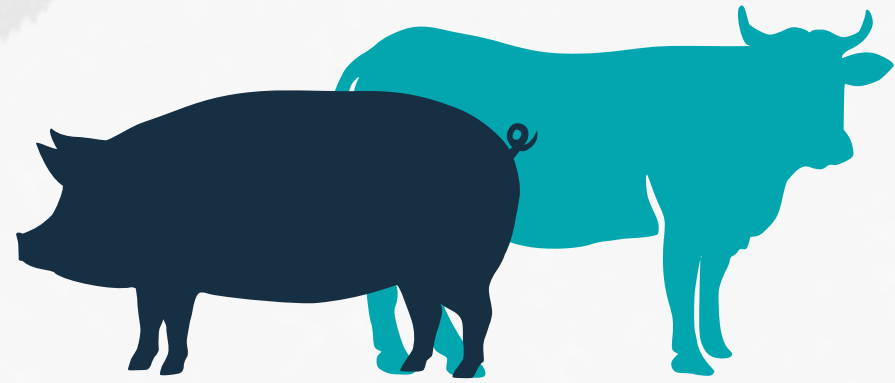




What info do we need?



Customer's First & Last



Animal Portion Size



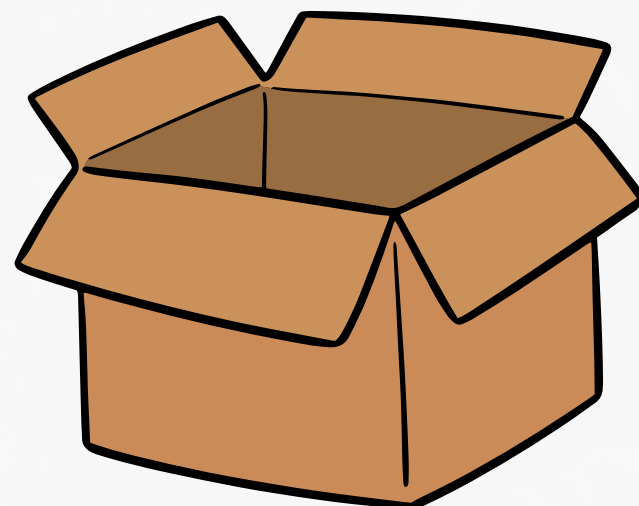
Phone Numbers



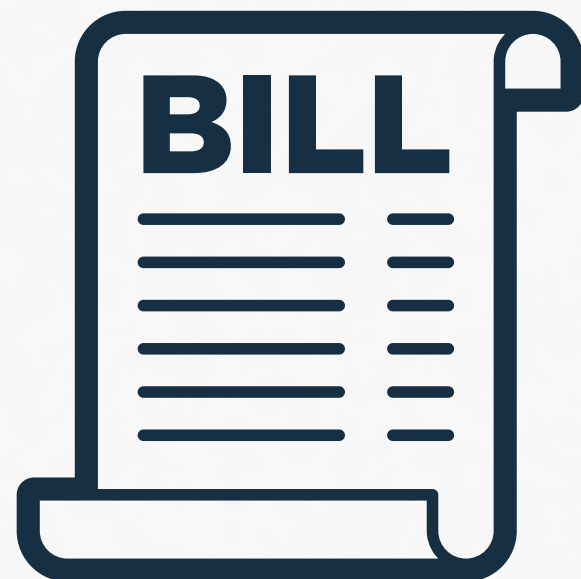
Collection?



Special Labels?



Boxed or in trays?



**Who is paying
for the order?**

Our Free Collection Service

We offer a **FREE** service to our livestock producers



Tell us your **price per pound** (hanging weight)
and we will invoice your customers

Our Free Collection Service

We offer a **FREE** service to our livestock producers



Tell us your **price per pound** (hanging weight)
and we will invoice your customers



Producer's must tell us the amount to be collected
before the animal is processed

Our Free Collection Service

We offer a **FREE** service to our livestock producers



Tell us your **price per pound** (hanging weight) and we will invoice your customers



Producer's must tell us the amount to be collected **before the animal is processed**



Customers will then need to bring a **check or money order** written out to their farmer for the amount due

Our Free Collection Service

We offer a **FREE** service to our livestock producers



Tell us your **price per pound** (hanging weight) and we will invoice your customers



Producer's must tell us the amount to be collected **before the animal is processed**



Customers will then need to bring a **check or money order** written out to their farmer for the amount due



Customers **MUST** pay the amount due in order to **take their meat home** from BCM

A smartphone is shown on the left side of the image. The screen displays a text message conversation. At the top, the status bar shows signal strength, Wi-Fi, and the time 4:21 PM. The messages are as follows: a grey bubble at 9:26 PM, a blue bubble at 9:34 PM, a grey bubble at 9:38 PM, and a blue bubble at 9:45 PM. A red speech bubble with white text is overlaid on the 9:34 PM message. The keyboard is visible at the bottom of the screen.

**“TIME TO PLACE YOUR
CUTTING INSTRUCTIONS!”**

**We will contact
your customers via
text or phone call.**

**Please let your customers
know— they can call or do
instructions online any time!**

**Now is a great time to educate your customers on
what they are getting and how to do it!**



**“YOUR ORDER IS READY
FOR PICK-UP!”**

**We will also contact your
customers when their order is
complete and ready for pick up.**

**VISIT OUR WEBSITE,
CLICK ON “INFO FOR
PRODUCERS” TAB.**

**STAY HERE FOR
PROCESSING
QUESTIONS Q&A**



Facebook Group

Scan to join!



A man in a plaid shirt is seen from the side, looking at a tablet device. He is standing in a grassy field with a herd of cows in the background. The scene is set during a golden sunset, with the sun low on the horizon. The text 'FARM FEATURE' and 'The Milk House' is overlaid in large white letters.

FARM FEATURE

The Milk House



the milk house
FARMSTORE

MILK - ICE CREAM - MEAT



the milk house

Open

NOTICE

OPEN





Farm Raised Beef

Farm Raised Pork

GROUND BEEF \$4.50 PER LB
BEEF PATTIES \$5.50 PER LB

GROUND BEEF \$4.50 PER LB
BEEF PATTIES \$5.50 PER LB

GIFT CARDS

1. Scan barcode
2. Pick amount to add to card.
3. Card is added to your card and you can check out as normal.



True

True

Thank you to our vendors!



Kent
Butchers' Supply Co.

